



FH-CeilingMountTrack

SofStop®

Single

Installation Instructions

Read through the notes carefully before beginning as different mounting plate positions and setups may be required for different configurations.

IMPORTANT

CS carriages require a clean track running surface free of any contamination or damage.
After installation but before lining, **clean the full length of the inside running surface of the track with a soft rag to ensure no dirt, grit or aluminum swarf get into the track. TAPE UP THE TRACK to ensure no dust or debris enter the track during building works.**

1. Prepare the door(s)

Note whether your mounting plates have a stop or not as the distance in from the edge of the door is different. Drill holes both ends of the door in the positions shown (**A** or **B**).

Screw both mounting plates to the door with the plunger pins facing towards the edges of the door. Make sure they are placed exactly in the center of the door thickness.

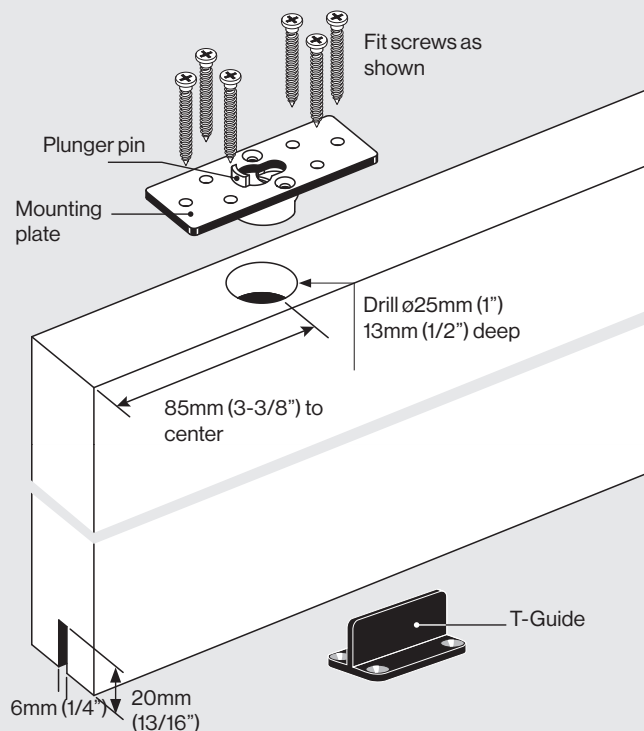
At the bottom of the door, cut a groove to the dimensions shown. Make it central of the door thickness and absolutely straight.

2. Mounting plate with stop

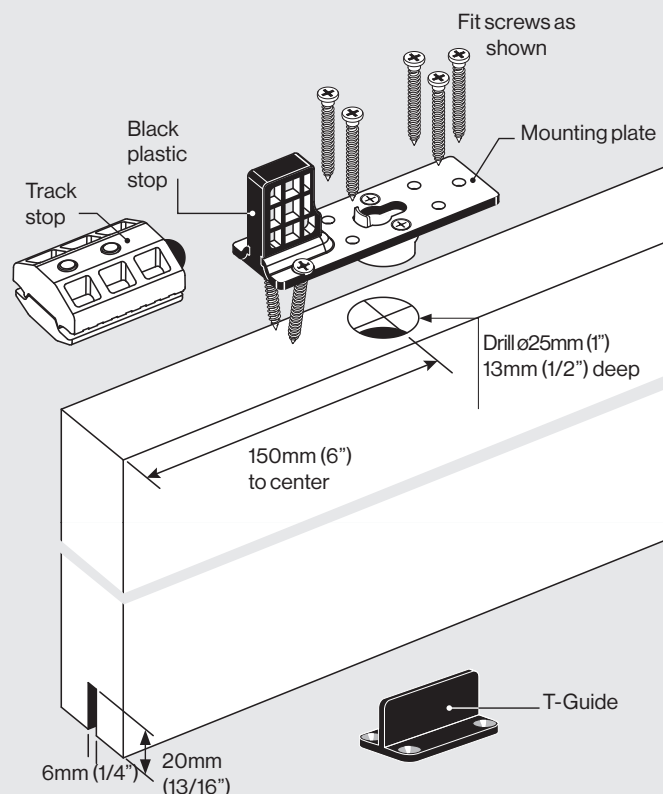
The mounting plate with the black plastic stop fits nearest to the leading edge of the door.

PREPARING DOORS

A. Mounting plate without stop



B. Mounting plate with stop



3. Install the track

Important: The track must be installed level otherwise the door will roll open or closed by itself.

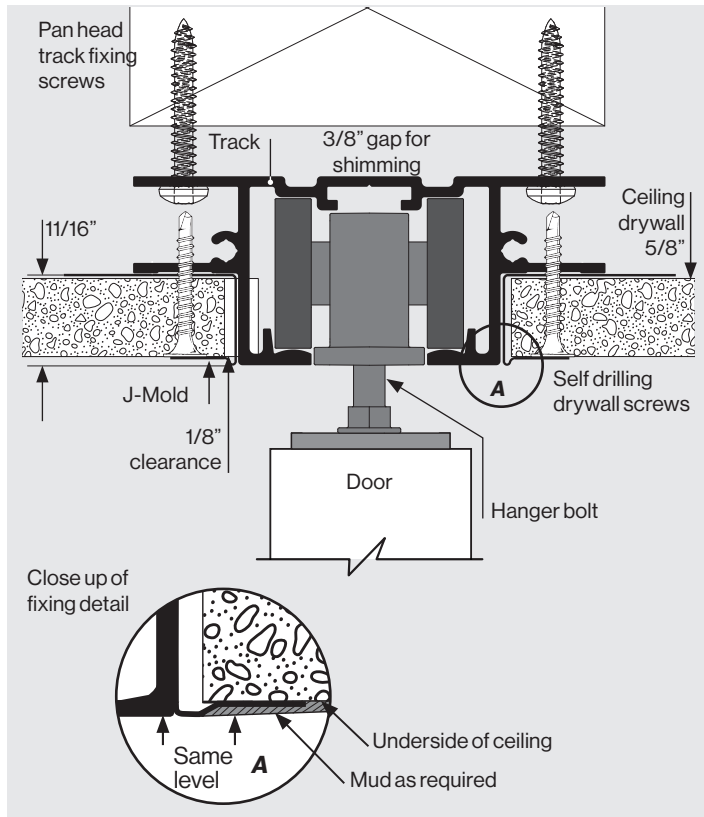
Fix through all the pre-drilled fixing holes provided and never through the center of the track.

The underside of the track should finish 1-2mm (1/16") below the underside of the ceiling before mudding.

Fit J-mold (not supplied) along track where required.

Cut drywall in and fix.

Mud and finish, taking care to keep the inside of the track free of dust and paint splatter by masking the track slot as much as possible.



4. Fit the carriages (A, B or C)

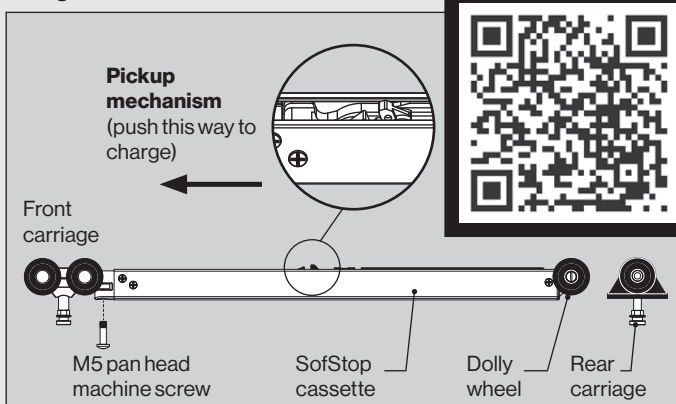
A. Standard M6/M8 (non-SofStop)

Insert the carriages into the track through the notched end, taking care not to damage the wheels on the sharp edge of the track.

B. SofStop® Single (Soft Close)

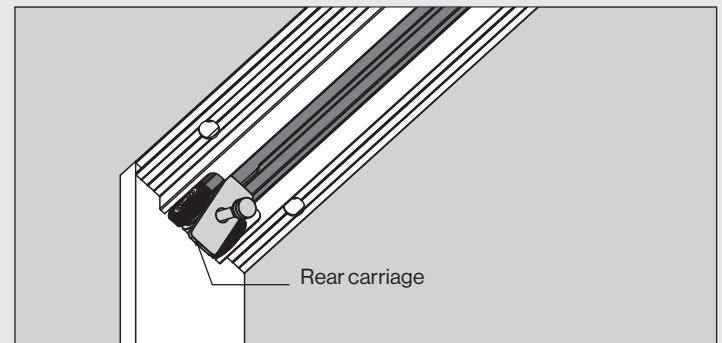
The single SofStop mechanism fits together as shown below. **Push pickup mechanism in the direction shown to charge it.**

WATCH VIDEO:
SofStop
Installation
and Trouble
Shooting Tips

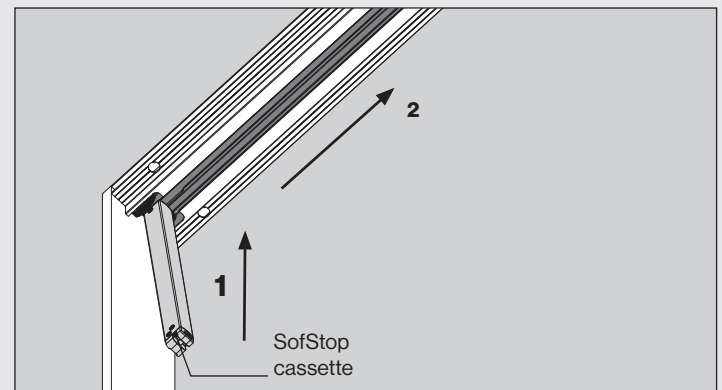


To load the SofStop mechanism into the track:

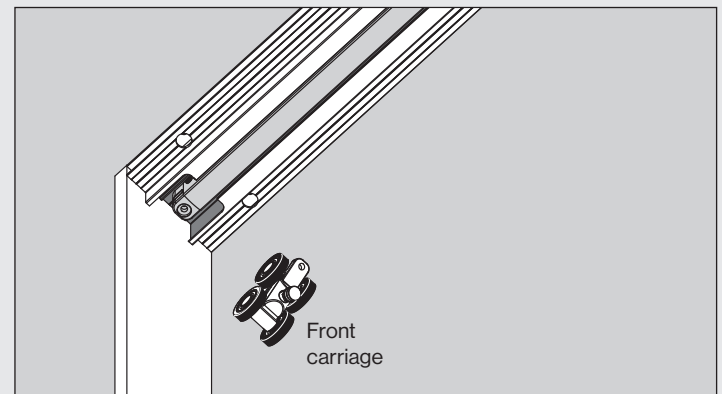
a) Insert the rear carriage in from the notched end of the track.



b) Insert the cassette into the notched end of the track, dolly wheel first, ensuring that the pickup mechanism is facing up.

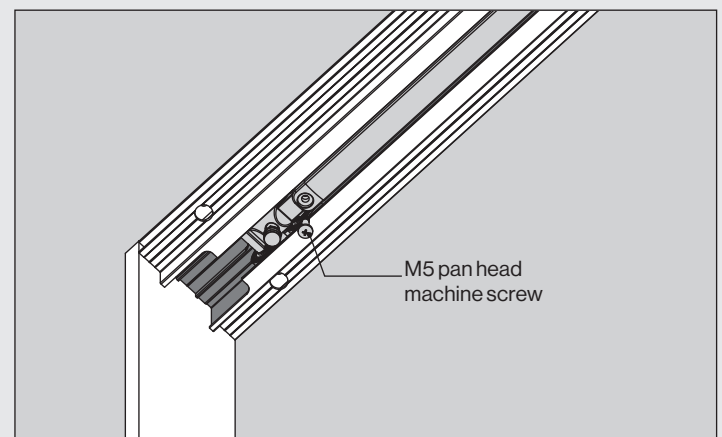


c) Slide the front carriage into the track with the tow bar facing into the pocket.



d) Secure the carriage to the cassette with the M5 pan head machine screw.

Tighten with a #2 Phillips drive.



C. SofStop® Twin (Open & Close)

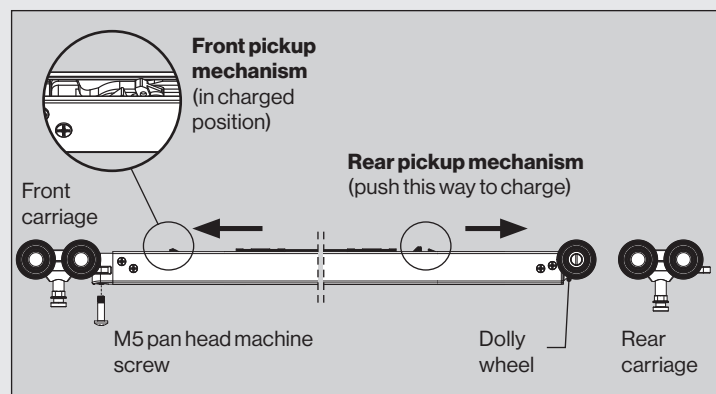
IMPORTANT: DO NOT DRYWALL THE POCKET UNTIL THE SOFSTOP MECHANISM HAS BEEN INSTALLED AND TESTED.

The twin SofStop mechanism fits together as shown below.

Push front and rear pickup mechanisms in the direction shown to charge them.

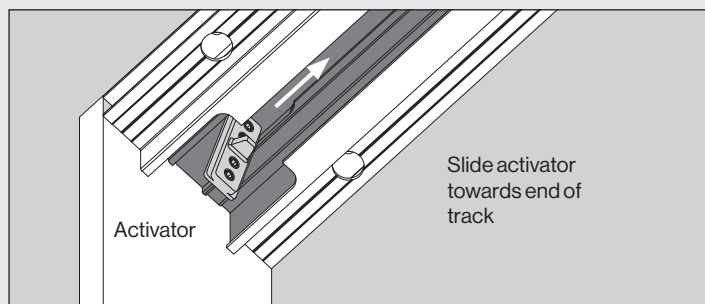
WATCH VIDEO:

SofStop Installation and Trouble Shooting Tips

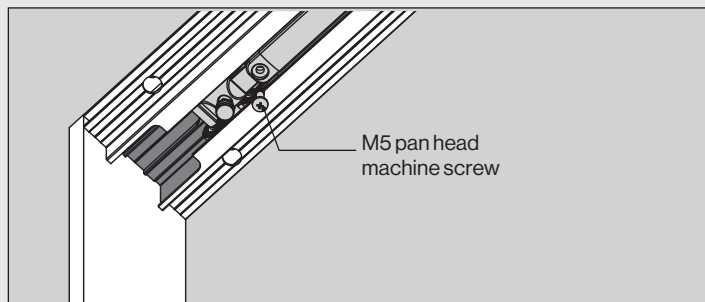


To load the SofStop mechanism into the track:

- Insert the first activator into the notch in the track and slide it towards the end of the track. **Do not tighten the screws - this position is temporary.**



- Insert the rear carriage, cassette and front carriage using the same method as Single Sofstop (B). Secure the carriage to the cassette.

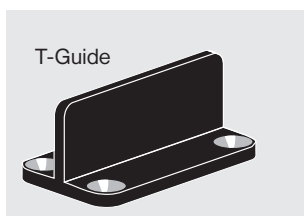


5. Fit the T-Guide

Screw the 23mm (7/8") high black plastic floor guide in the correct location.

The T-Guide should be concealed directly below the front edge of the door.

Note: a 50mm (2") high T-Guide is available if required.



6. Hang the door

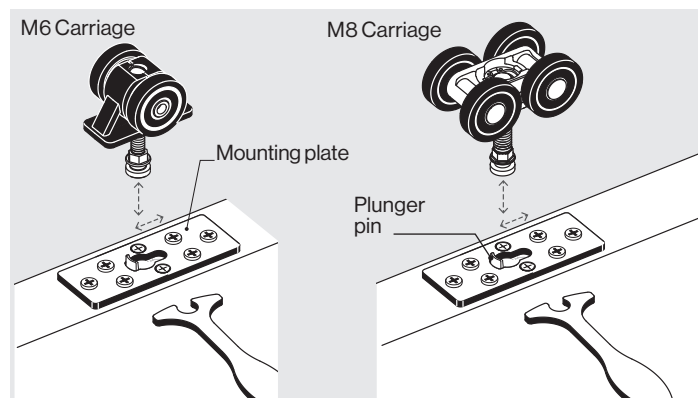
Position the carriages in the pocket opening approximately where the mounting plates on the door will be located when the door is in the closed position.

Slide the door over the T Guide.

Position the door underneath the carriages.

Raise the door up so that the round head of the wheel hanger shaft lines up with the keyhole shaped hole in the mounting plate.

Depress the plunger using the wheel hanger shaft head and slide sideways using the adjusting wrench until it snaps into locked position. Repeat for the other carriage.



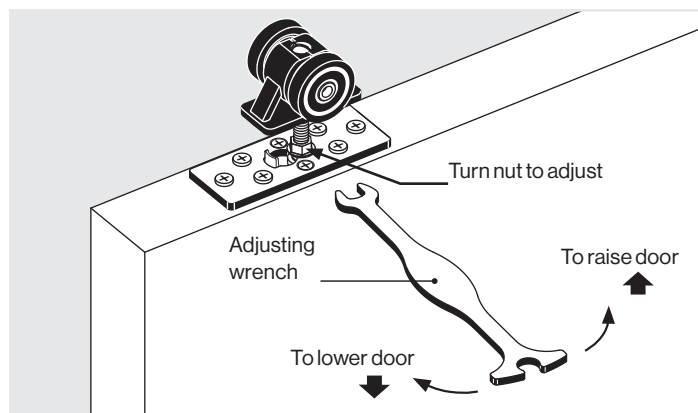
7. Adjust the door height

When adjusting door height, the wrench should be horizontal to the nut.

Use the small end of the wrench supplied to adjust the door for height and plumb.

To **raise** door: Rotate wrench from **left to right**.

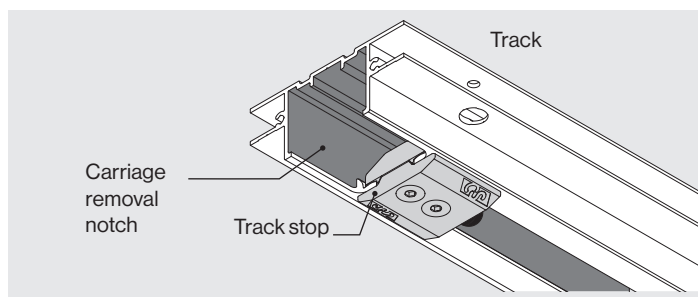
To **lower** door: Rotate wrench from **right to left**.



Take care not to wind the hanger pin up too far on SofStop carriages as it will hit the activator in the track.

8. Insert the track stops (if required)

Once the door is installed and running smoothly, insert the track stops into the track (if not already fitted) and tighten in the correct location.



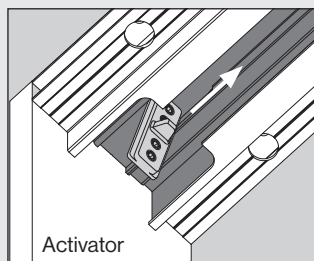
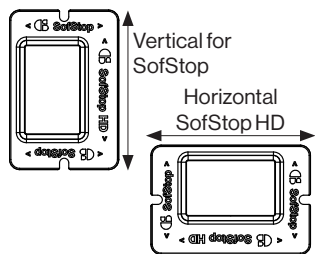
9. Setting the activator(s)

Note: Single Soft Close requires one front activator only.
Twin Soft Open & Close requires two activators.

CS SofStop Single & Twin (No Track Stops)

- a) Open the door and insert the front activator, moving it into the approximate center of the door opening.

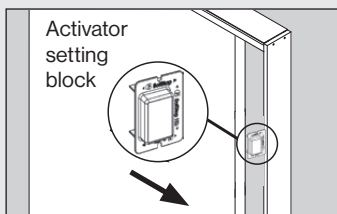
Orient the activator setting block according to your SofStop model (SofStop or SofStop HD) per the diagram below.



- b) Position the activator setting block against the center of the closing jamb, back stud (for rear activator), or straight edge and gently close the door onto it. The activator will slide along the track into the correct position.

- c) Without moving the activator, fix its position by tightening all four set screws

- d) Repeat Steps B and C for rear activator.

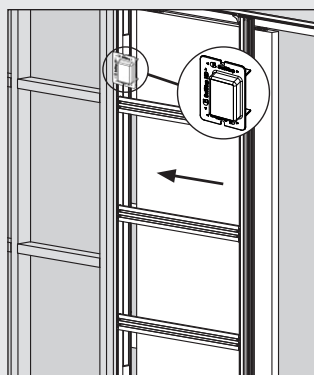


WARNING:

SofStop is designed to slow down the door. Your door must stop on a closing jamb, back stud, or track stop.

If a physical stop is not used, you risk breaking the hook on the mechanism.

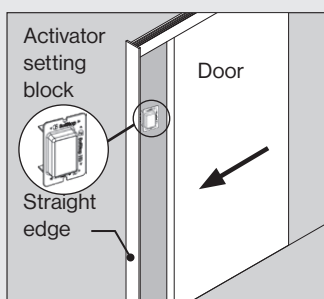
If you use the activator setting block correctly, this will be avoided.



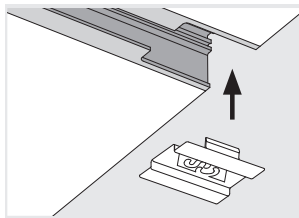
CS SofStop Single & Twin with Track Stops

10. If your door does not close into a wall or structural stop, you must use our Track Stop

- a) Position the track stop where you would like the door to rest.
- b) Position a straight edge in line with the edge of the door in its closed position.
- c) Hold the activator setting block on the straight edge and gently close the door onto it. The activator will slide along the track into the correct position.
- d) Without moving the activator, fix its position by tightening all four set screws.



11. Insert the track notch cover if required



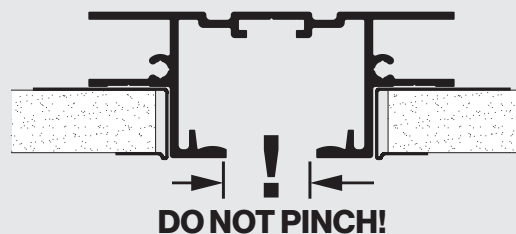
12. Painting the track

If track is to be painted on site to match the ceiling color, we recommend the use of Rust-oleum self etching primer first. Follow the manufacturer's instructions for preparation and application (available for download from our website).

Apply top coat.

IMPORTANT

Original track slot width must be maintained when lining ceiling. Smooth running may otherwise be affected.



13. If you need to remove the door

Fit the club end of the adjusting wrench over the hexagonal nut at the bottom of the hanger pin.

Use the extended part of the wrench to press down the plunger pin that protrudes up from the mounting plate.

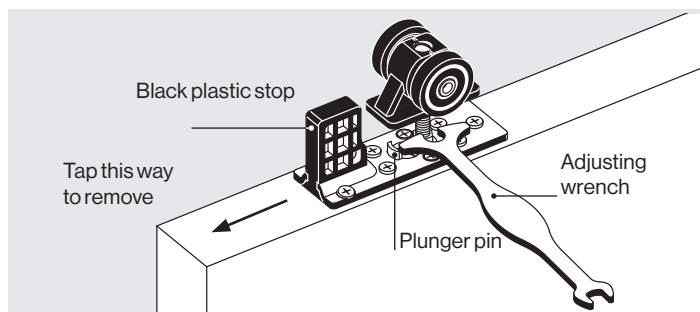
Once this plunger is fully depressed slide the wrench sideways towards the plunger pin.

The whole carriage (including the shaft) will now disengage from the mounting plate.

It is not always easy to slide the wrench sideways.

You may need to relieve the door's weight by putting a wedge between door and floor.

Mounting plates with stops: Remove the black plastic stop that is tightly fitted into the mounting plate by tapping it out in the direction shown using a hammer and drift.



Cavity Sliders USA Inc.
548 Finney Ct, Gardena, CA 90248
Phone: (888) 466 0030
Fax: (310) 769 5824

info@cavitysliders.com

Another quality product from:



www.cavitysliders.com

© All copyright and other property in this document is reserved by Cavity Sliders USA Inc. Details and specifications are subject to change without notice. Whilst all care is taken to ensure the accuracy of all information, no responsibility will be accepted for any errors or omissions. Drawings are not to scale.

CS FULL-HEIGHT TRACK SINGLE (O.D. 2018). 01.2021 - ZG00264 / 61312/US