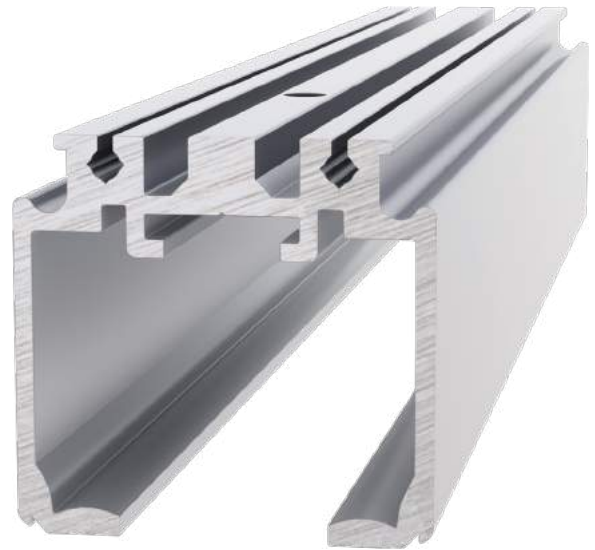


# TopMountTrack - Single

The **CS CaviTrack™** is a smooth running low profile track system. Its versatility makes it popular for a range of opening types including pocket, barn, partition and multi-sliding applications. The clip on fascia is suitable for use in barn door and partition applications.

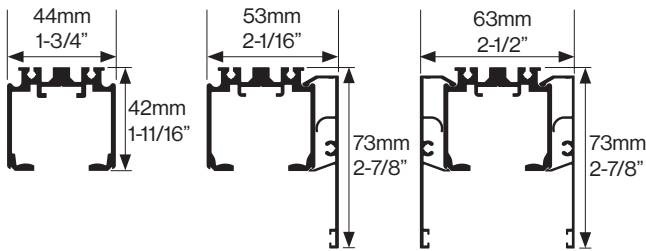
CS CaviTrack is ideal where longevity of use and smooth operation are required.

The CaviTrack can be upgraded to SofStop® soft close. This is suitable for areas where quiet is required, such as bedrooms, offices and patient rooms.



 **COMPATIBLE WITH:**  
SofStop® Soft Close / Soft Open

## Technical Information



## Standard Features & Options

- Suitable for incorporating into pocket frame assemblies for a smooth running high end system.
- 304 stainless steel components available for corrosive environments.
- Track can be configured to suit Bi-Parting or CornerMeeting set-ups.
- Clip-on fascia available. Standard finishes: Clear or Bronze Anodized. Inquire about custom colors.

Our products come with a number of unique features:

- Heavy duty one-piece extruded aluminum track.
- Pre-machined mounting holes.
- Minimal clearance means the carriages/wheels cannot jump off the track or jam.
- Large diameter wheels with precision ground bearings make for smooth running.
- Radiused track reduces friction and allows dust to be pushed into the gutters so the door always slides smoothly.
- M8 body made from cast stainless steel for strength and reliability. 4-wheel carriages are standard on all doors over 200lb.
- CarriSnap™ quick release system allows the door to be removed easily from the track; no need to unscrew anything and lose door height adjustment.



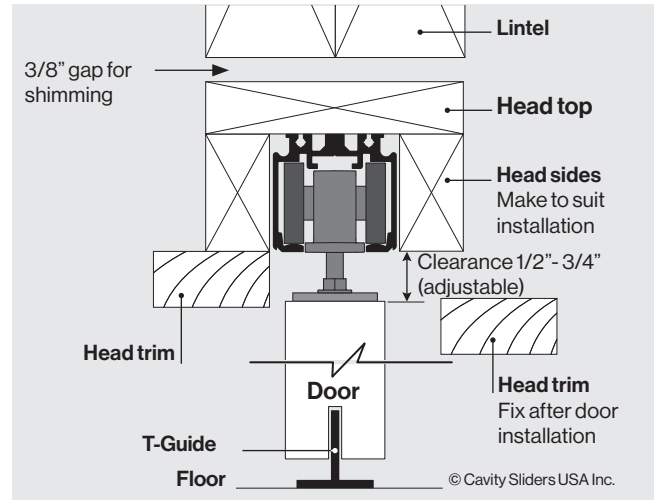
CaviTrack with M6 carriage



M8 carriage & mounting plate with stop

- Track Finish:** Clear anodized
- Fascia Finish:** Clear or bronze anodized
- Door Thickness:** No fascia: No limit  
With fascia: 35-45mm (1-3/8" - 1-3/4")
- Max Door Weight:** Standard: 240kg (500lb)  
SofStop: 120kg (264lb)
- Carriage Pack:** M6/M8/SofStop

## Suggested Assembly Detail



## SofStop® Features & Options

- High quality mechanism independently tested to 100,000 cycles.
- Soft close mechanism is hidden from sight, yet remains fully serviceable.

<b>Standard</b>	<b>M6 (200lb/90kg)</b>	
	<b>M8 (500lb/240kg)</b>	
<b>CS SofStop</b>	<b>Minimum Door Width</b>	
	<b>No Stop</b>	<b>1 Stop</b>
<b>0 - 200 lb (90kg)</b>	23" (584mm)	26" (660mm)
<b>CS SofStop HD</b>	<b>Minimum Door Width</b>	
	<b>No Stop</b>	<b>1 Stop</b>
<b>0 - 350 lb (160kg)</b>	26" (660mm)	29" (737mm)

## How to Order

Refer to Carriage Packs page for more information

- Specify track length  
Available in 6', 8', 12 and 24' pre-cut lengths or can be cut down to specified length on request.
- Specify door weight & width (see options)
- Choose a carriage pack (one per door)  
**- refer to Carriage Packs page**  
M6 (200lb), M8 (500lb) or SofStop
- Fascia & End Caps (optional) - Specify finish.

# CS<sup>®</sup> TopMountTrack - Double/Triple

The **CS TopMountTrack** is a smooth running low profile track system suitable for incorporating into pocket door frame and bypass wardrobe assemblies.

The addition of the TopMountTrack and CS carriage system allows you to transform a standard pocket into a luxury item. This system is ideal for use in applications where longevity of use and smooth operation are required.

TopMountTrack is available as standard in a double or triple track configuration.

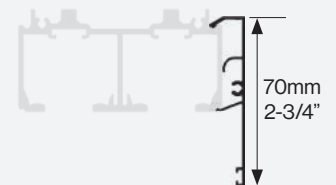


Double TopMountTrack (1-3/8" door option)



Triple TopMountTrack (1-3/8" door option)

All TopMountTracks are available with fascia

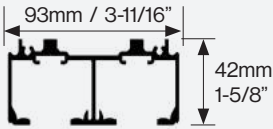


COMPATIBLE WITH:  
SofStop<sup>®</sup> Soft Close / Soft Open

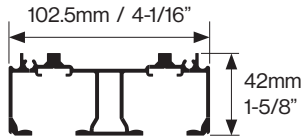
SofStop<sup>®</sup> Soft Close / Soft Open

## Technical Information

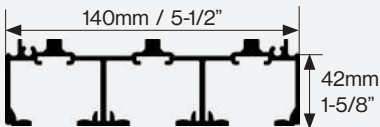
### Double Track - 1-3/8" doors



### 1-3/4" doors

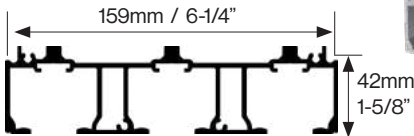


### Triple Track - 1-3/8" doors



### 1-3/4" doors

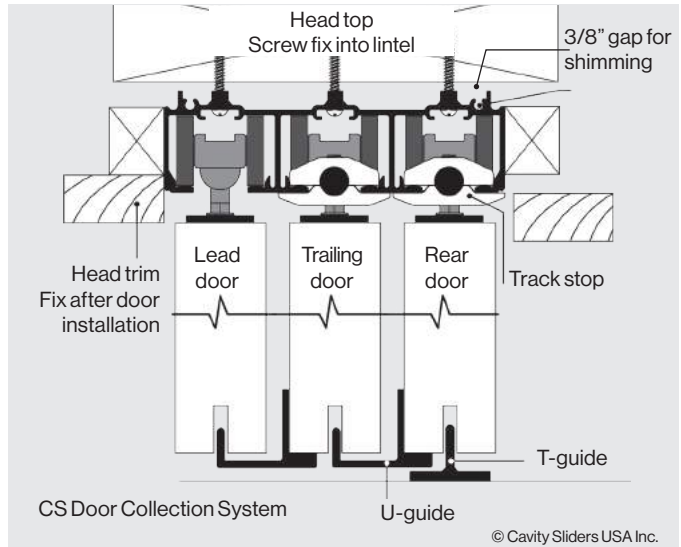
### 1-3/4" doors



Track	Double	Triple
Finish	Mill-finish	Mill-finish
Recommended Door Thickness	35 or 45mm (1-3/8" or 1-3/4")	35 or 45mm (1-3/8" or 1-3/4")*
Max Weight/door	240kg (500lb)	240kg (500lb)
Carriage Pack	M6 or M8	M6 or M8

\*For thicker doors, please contact us for suitable options

## Suggested Fixing Detail



## Design Features & Options

- Tracks can be used for bypass and collection systems.
- Tracks can be configured to suit Bi-Parting door set-ups, including CornerMeeting detail.
- Available in 6', 8', 12' and 24' pre-cut lengths. Custom lengths can be cut to order.
- Heavy duty one-piece extruded aluminum track.
- Pre-machined mounting holes.
- CarriSnap™ quick release system allows the door to be removed easily from track; no need to unscrew anything and lose door height adjustment.



M8 carriage & mounting plate with stop

## Door Collection System

Where multiple doors are required to slide in conjunction with one another, the **CS Door Collection System** ensures a smooth running telescopic system (*see separate brochure*). The doors are connected so that there is no need for floor tracks or guides through the opening.

### How to Order

1. Choose track configuration (double or triple)
2. Specify door thickness
3. Specify track length (available in 6, 8, 12 and 24' pre-cut lengths)
4. Choose a carriage pack (one per door)
  - refer to **Carriage Packs page**
  - a) M6 (200lb)
  - b) M8 (500lb)
  - (includes carriages, mounting plates, T-Guide, fixing screws, adjusting wrench and installation instructions)
  - c) CS Door Collection System (includes M6 or M8 carriage pack plus door collection system for 2 door or 3 door setup)