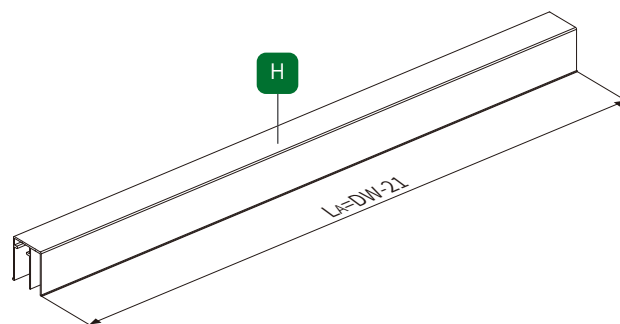
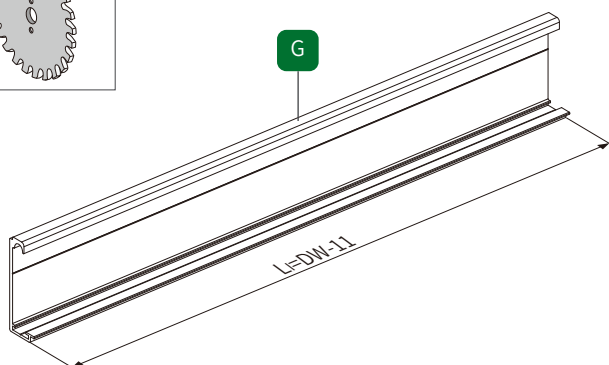
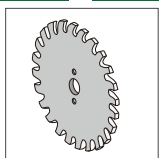
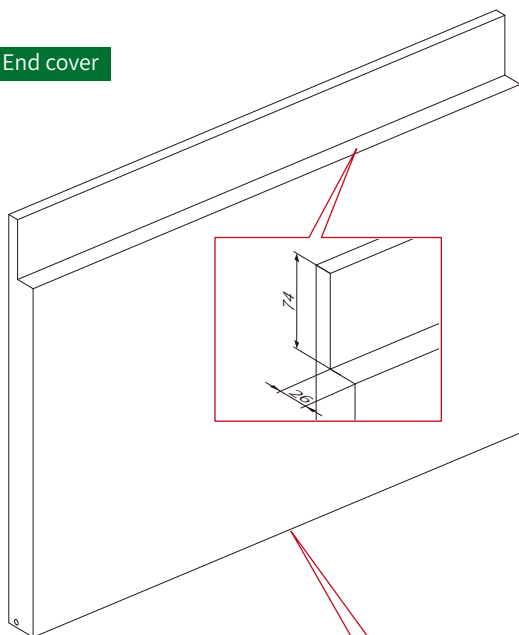


1 Cutting profiles

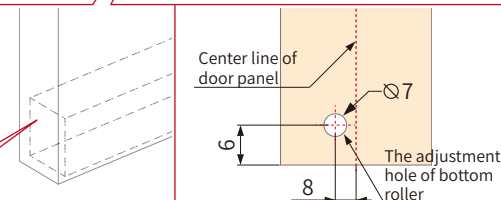
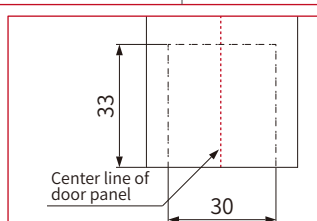
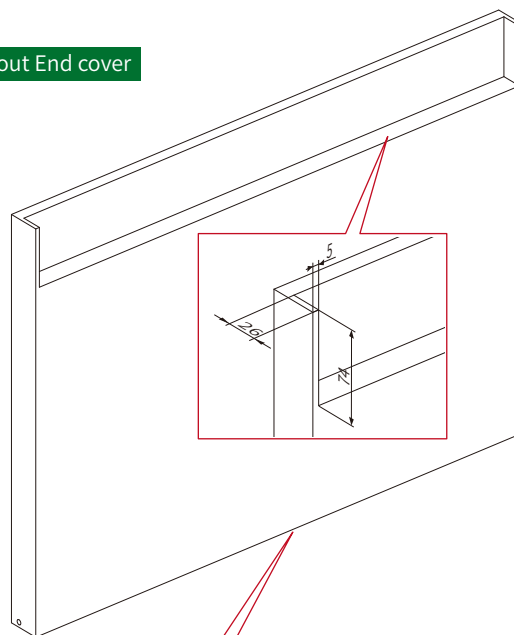


2 Door panel Slotting size

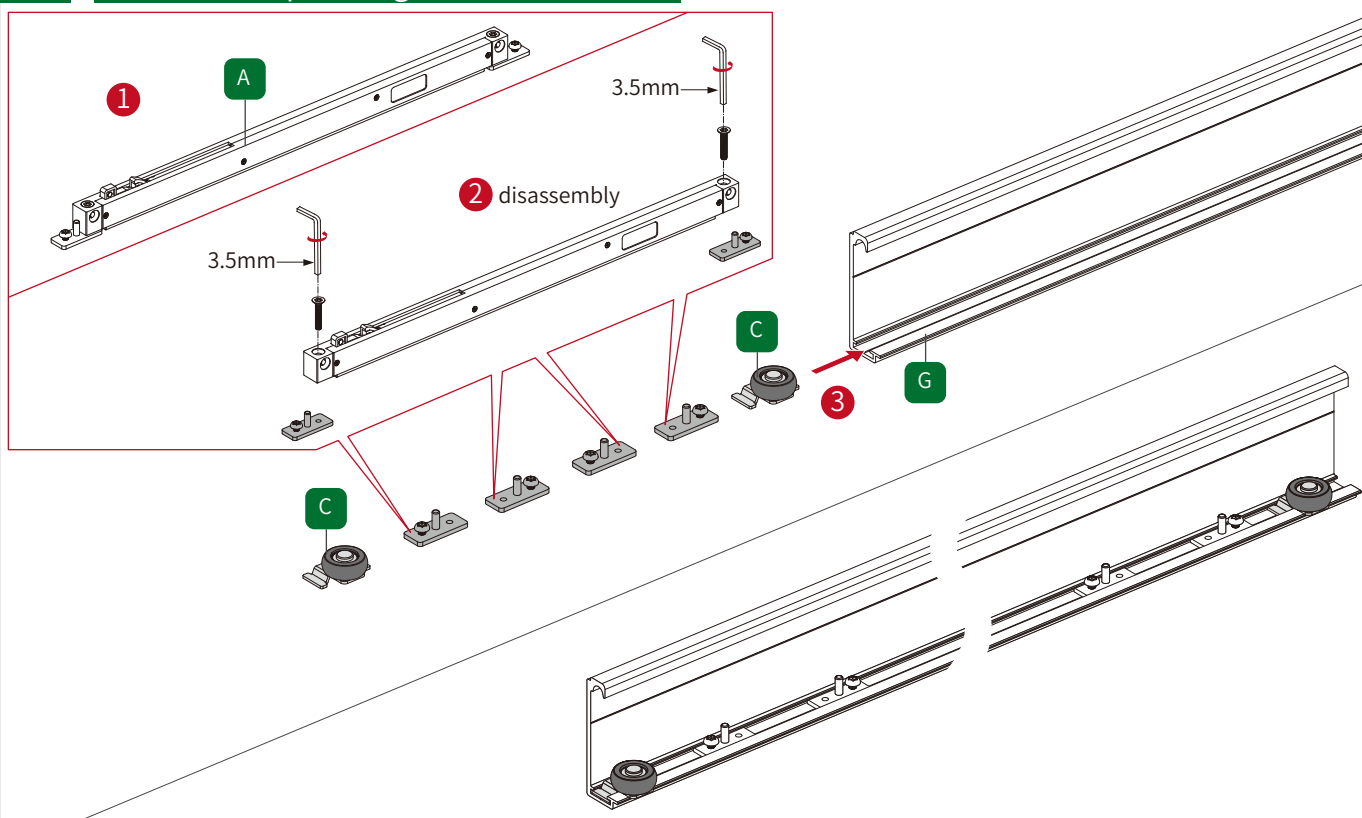
with End cover



without End cover

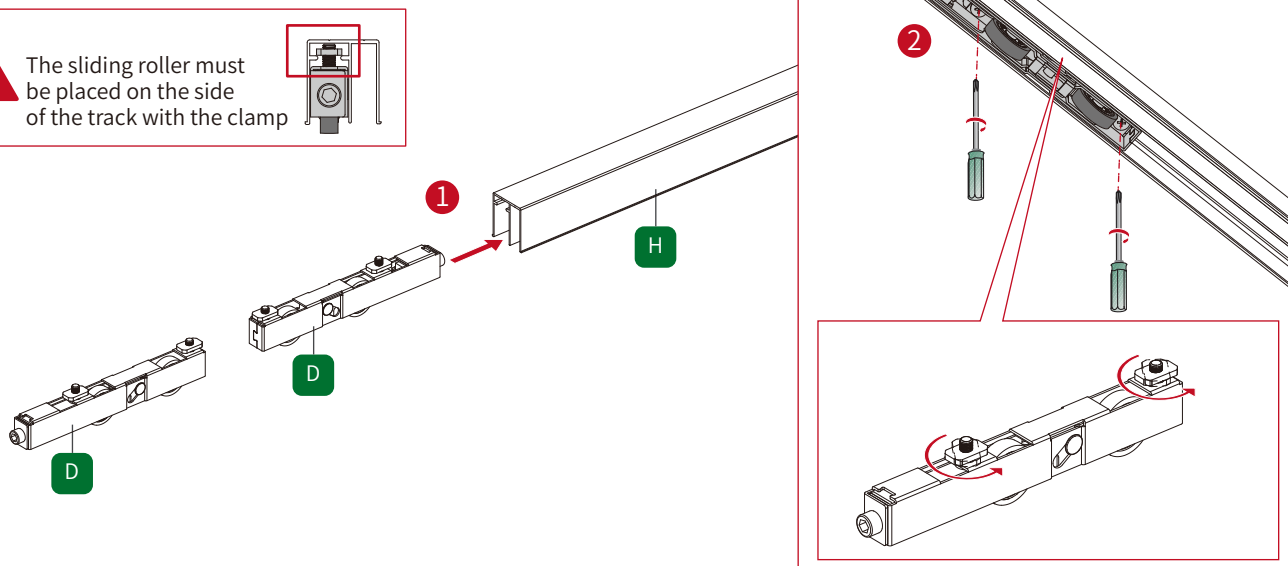


3 Install the top sliding track accessories

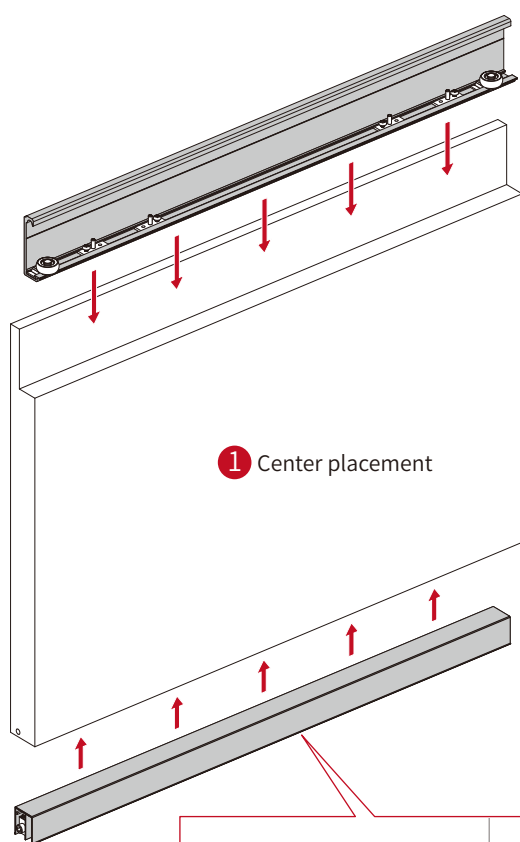


4 Install the bottom sliding roller

! The sliding roller must be placed on the side of the track with the clamp

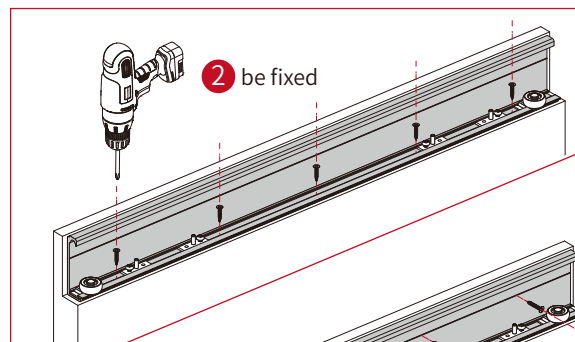
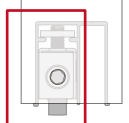


5 Install top sliding track and bottom sliding track

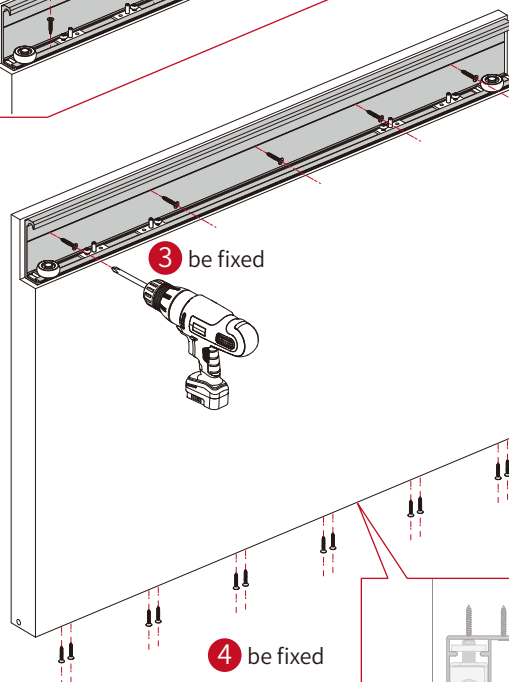


1 Center placement

! The track with the slots must be in the direction of the holes

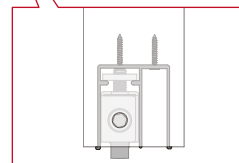


2 be fixed

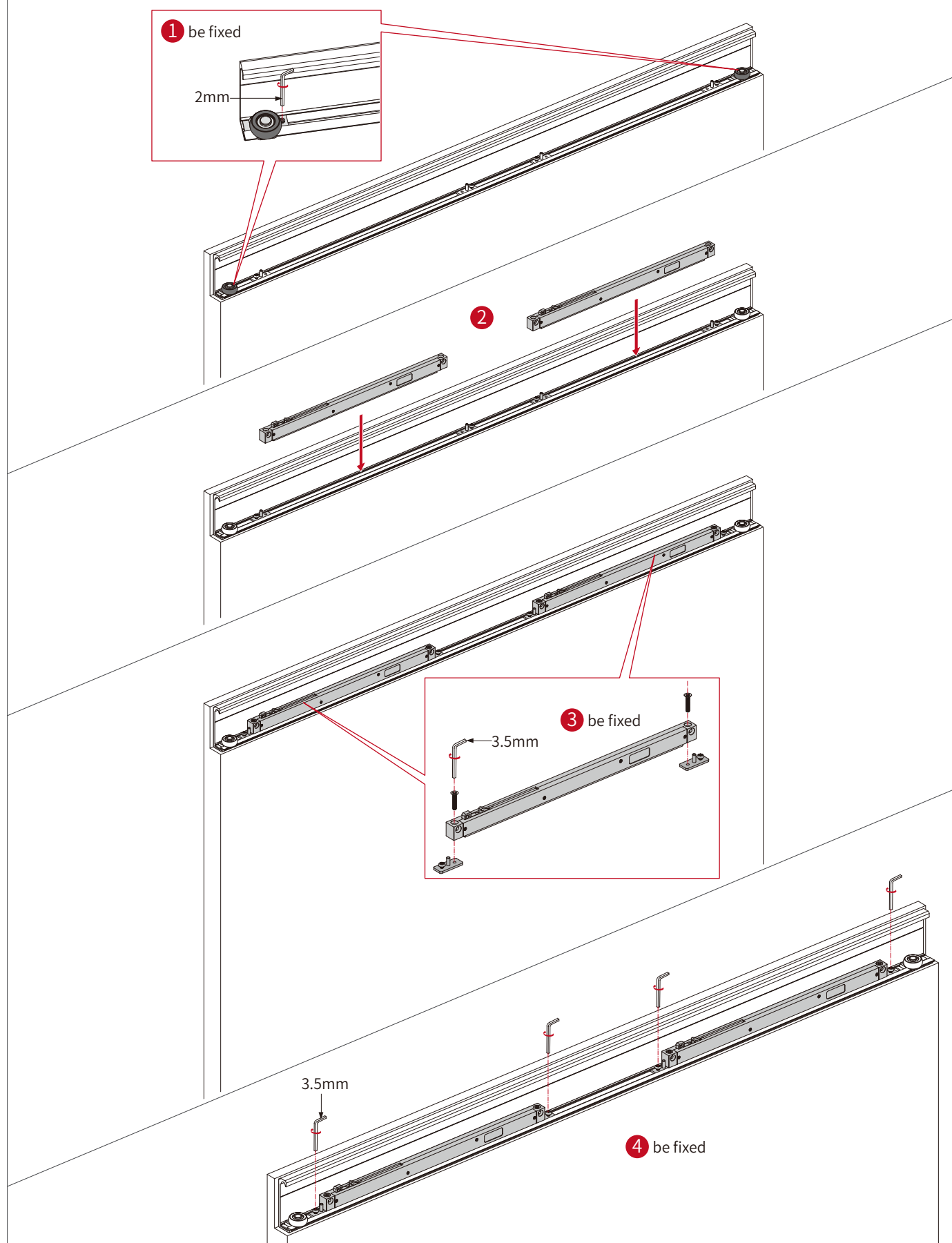


3 be fixed

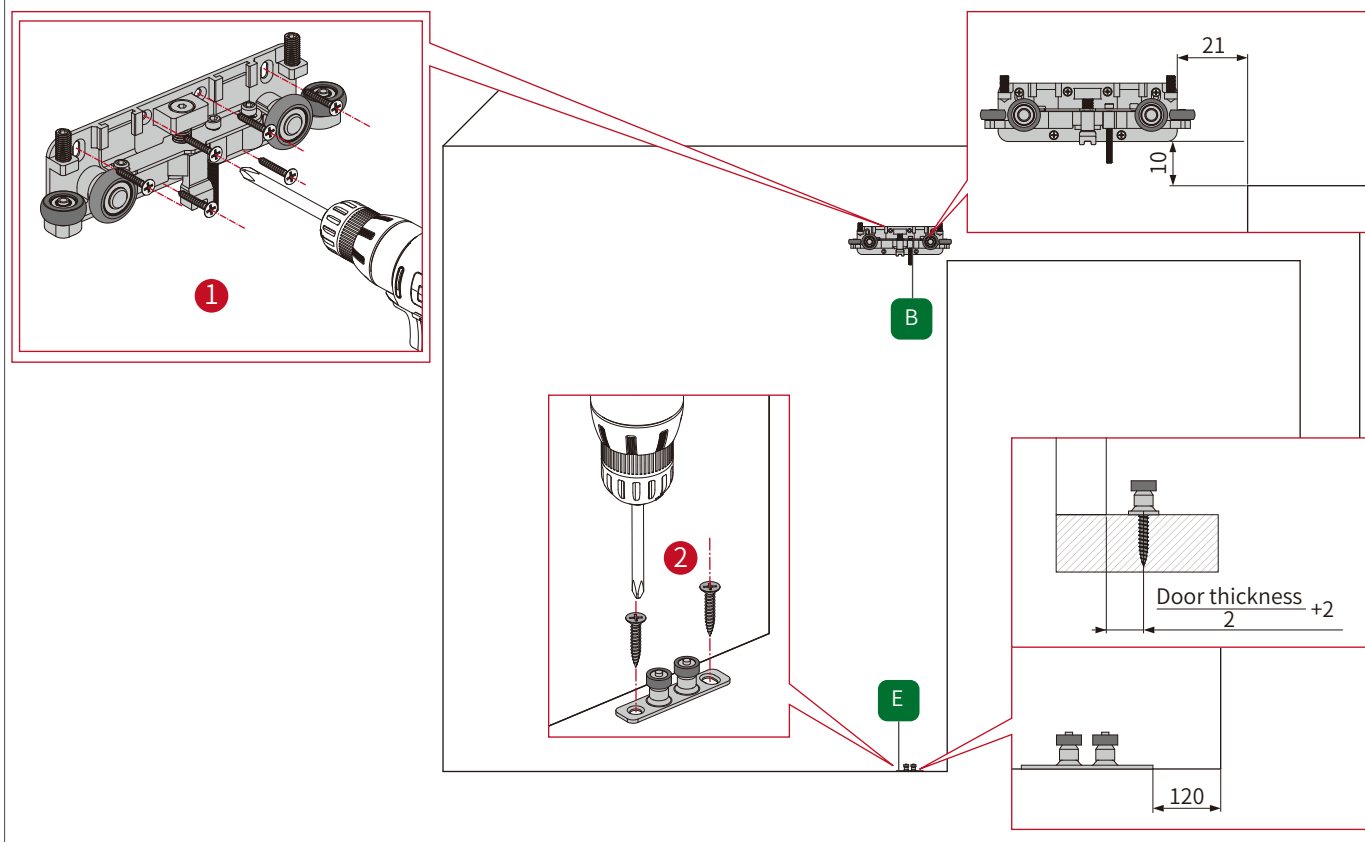
4 be fixed



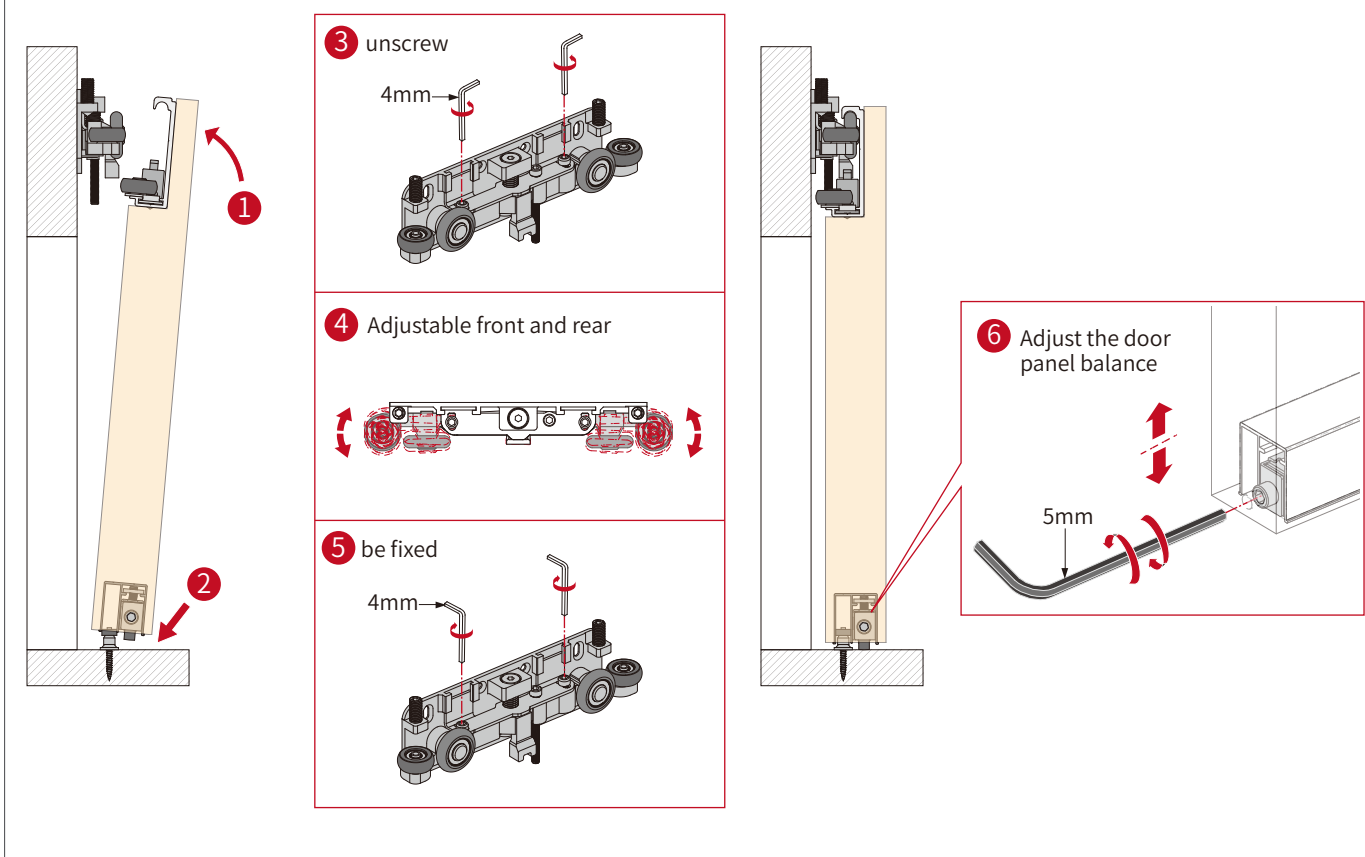
6 Install the door panel accessories



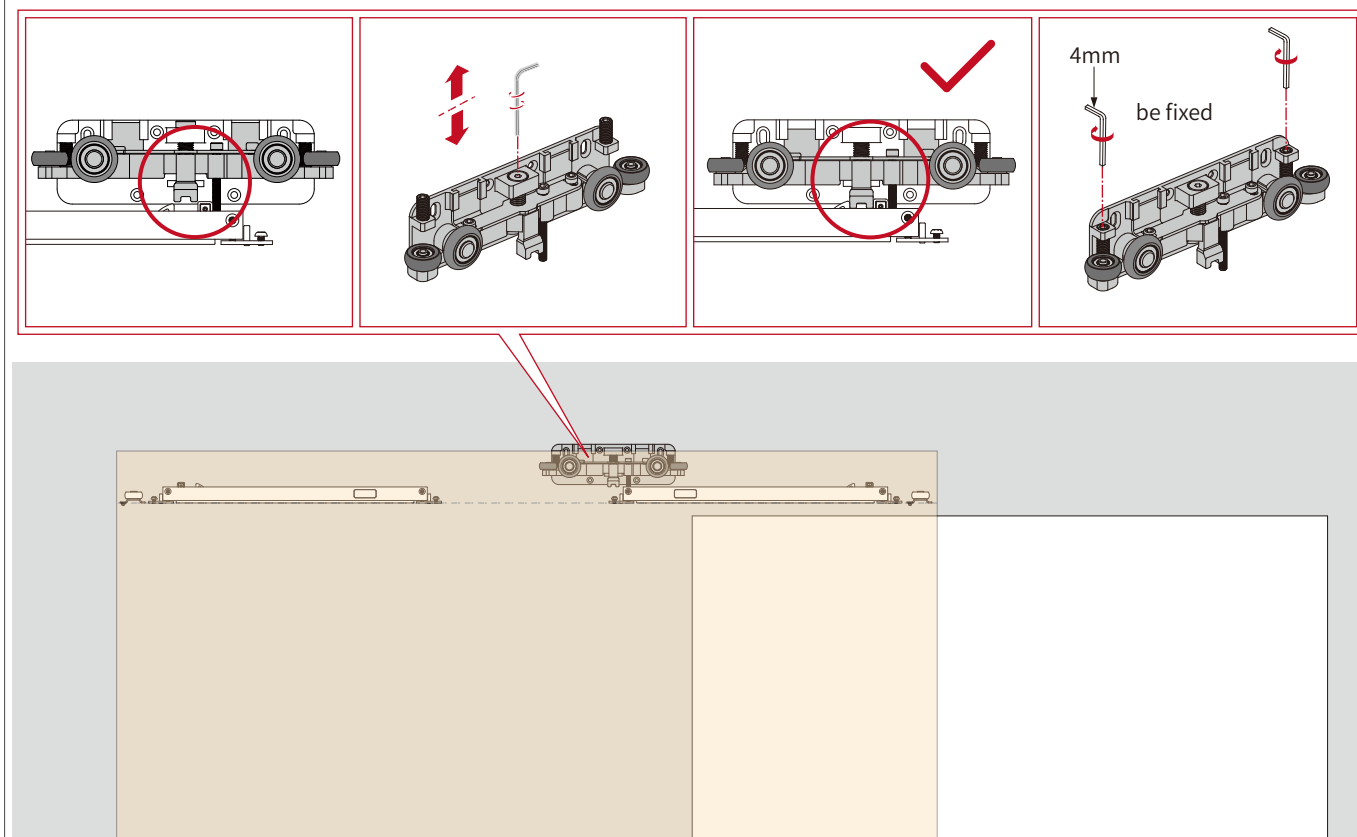
7 Install the door opening accessories



8 Install the door panel



9 Positioning damper



10 Install the side cover

